



Application Note APN022017

May 2018

Windows

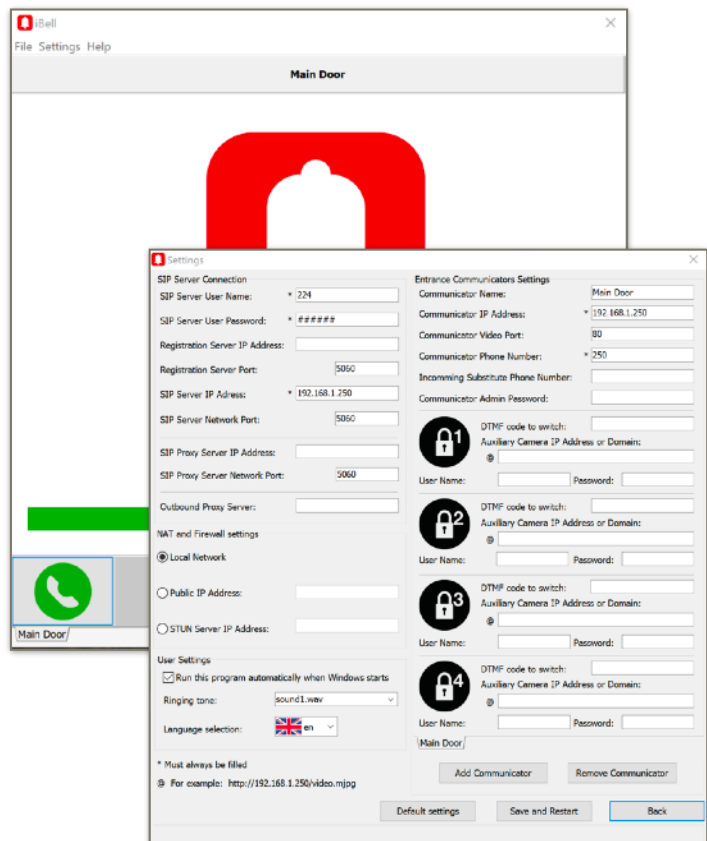
Translation of texts into other languages

1. Features

- Any world language
- Text translation directly at runtime
- Language editor included with every installation of iBell office
- Immediate check of translation accuracy
- Quickly add a new language to next globally distributed version of iBell office

2. Description

Texts used in iBell office can be translated into any world language. The translation is done directly while running iBell office using the Language Editor, which is part of every program installation. Translated text can be immediately checked on the running program. When translating, the language files stored on the computer disk are updated. By sending these updated files to technical support, the language will be edited in all next worldwide iBell office versions.

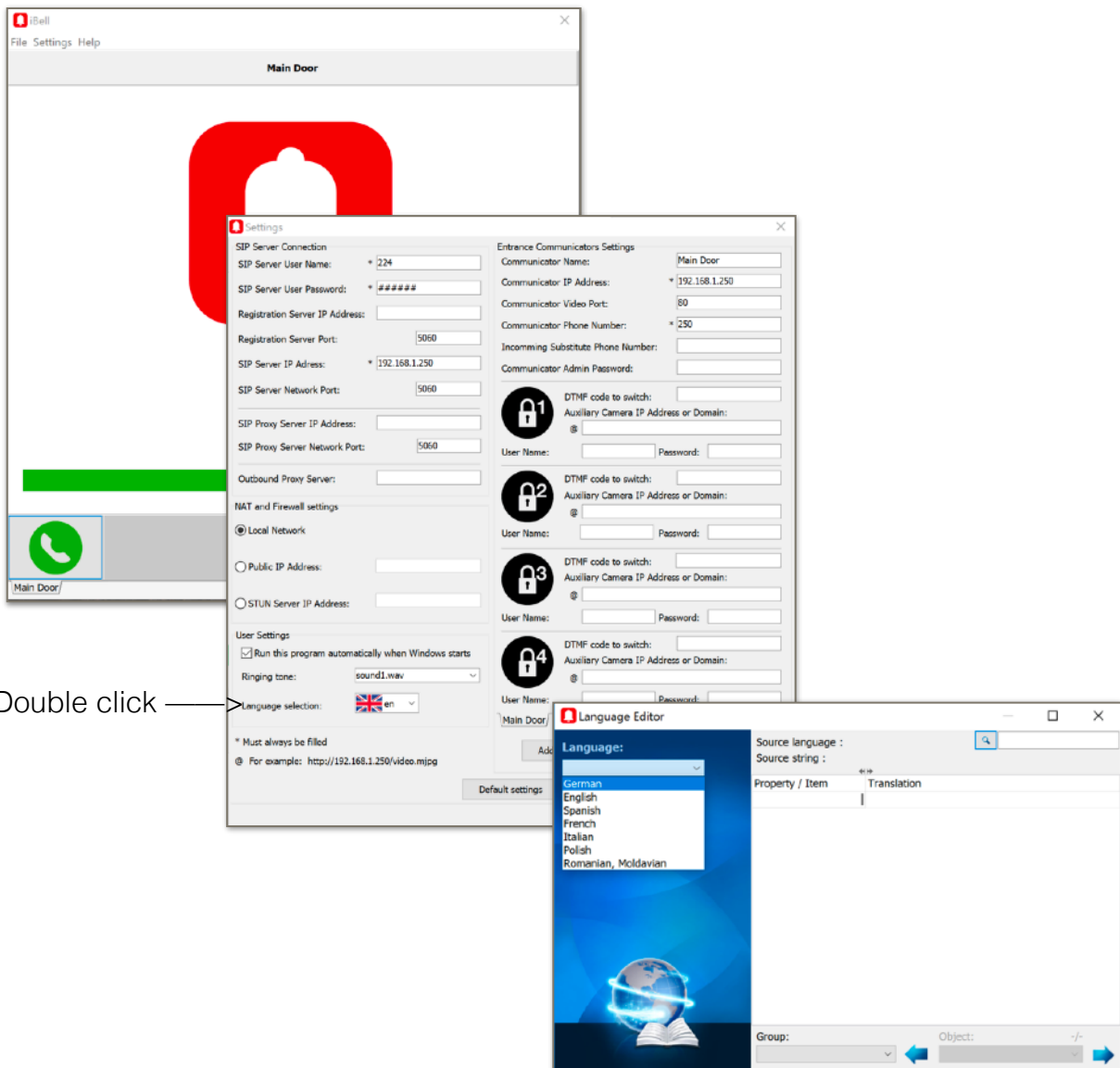




Application Note APN022017

3. Translation procedure

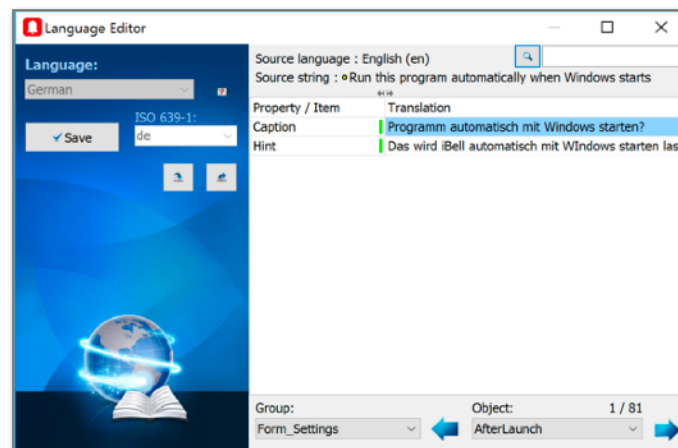
1. Run the program iBell office
2. Open the Settings window
3. Double-click to text "Language selection" to start the Language Editor
4. Select the language we want to edit



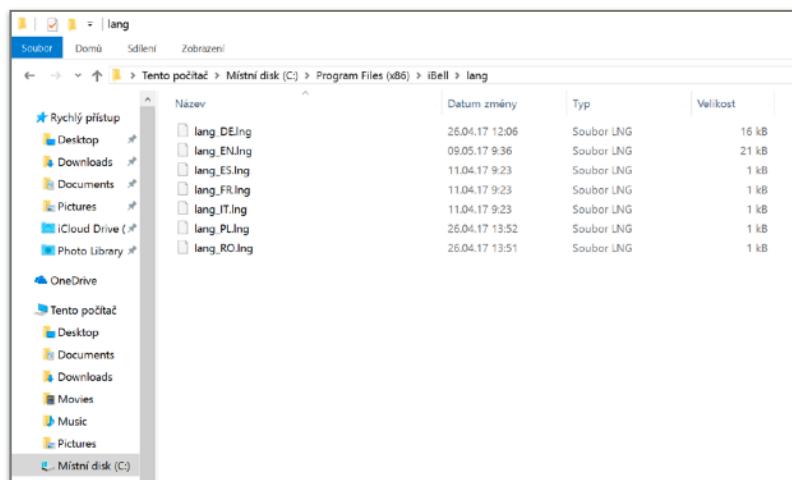


Application Note APN022017

5. Browse all text groups (program forms) and their objects (texts) and edit their translations into the selected language
6. Save changes to a file on a disk using button "Save"



7. Exit the program iBell office
8. Open Windows Explorer
9. Find files with saved texts
10. Send the edited files to the technical support where they will be used for distribution in the next version of this program iBell office



Many thanks for your help :-)